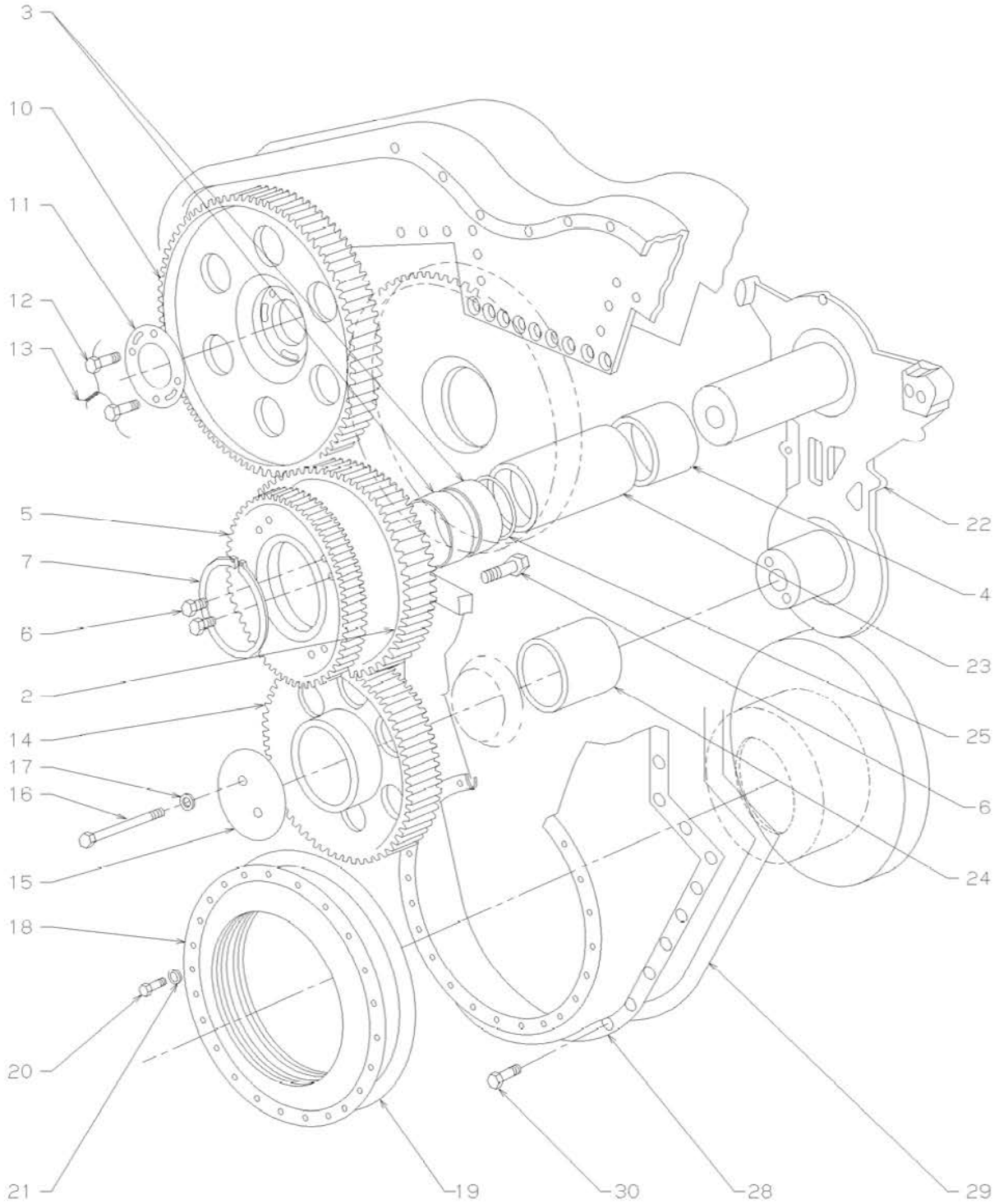


Assembly 15: CRANKSHAFT DRIVE GEAR TRAIN Crankshaft Drive Gear Train and Housing Application



EN45378

Asm - Ref. No.	Part Number	Qty.	Description
15-1	40004866	1	CLUTCH ASSEMBLY.. Turbocharger drive Left hand rotation - Utex No. 40028648 (not shown assembled) - See page 1-39
-2	40001038	1	GEAR ASSEMBLY.. Upper idler - 58 Teeth <i>Replacement bearings must be precision bored after assembly.</i>
-3	8407341	2	BEARING.. Hub
-4	8261101	1	BEARING.. Gear
-5	40004869	1	GEAR.. Turbocharger drive - 86 Teeth
-6	9584413	16	BOLT.. Drilled hex head 5/8-18 x 1-1/2
-7	9414864	2	RING.. Snap
-8	9534855	2	RING.. Retaining (not shown)
-9	8116738	AR	WIRE.. Lock - 3/64 diameter x 500 feet long (not shown)
-10	8069019	2	GEAR.. Camshaft drive
-11	8266455	4	PLATE.. Retainer - Dowel
-12	8028335	8	BOLT.. Hex head 1/2-20 x 2-1/4
-13	8116738	AR	WIRE.. Lock - 3/64 diameter x 500 feet
-14	9543203	1	GEAR.. Lower idler
-15	9544010	1	PLATE.. Thrust
-16	40033601	2	BOLT.. Drilled hex head 7/8-14 x 7
-17	9334204	2	WASHER.. Special - 15/16 I.D. x 2-1/8 O.D. x 1/4 inch thick
-18	8175731	1	RETAINER.. Gear train oil
-19	9570645	1	GASKET.. Gear train oil retainer
-20	181370	24	BOLT.. Hex head 3/8-24 x 1-1/4
-21	6101225	24	WASHER.. Flat 3/8
-22	9543887	1	STUBSHAFT ASSEMBLY.. Idler gear <i>Replacement bearings must be applied with a heat shrink press fit.</i>
-23	8261195	1	SLEEVE.. Bearing - Upper
-24	8418334	1	BEARING.. Sleeve - Lower
-25	8294874	1	SEAL.. O-ring - Idler gear stubshaft
-26	8028302	18	BOLT.. Drilled hex head 1/2-20 x 1-1/2 - Stubshaft mounting (not shown)
-27	8260114	18	WASHER.. Flat - 1-1/16 O.D x 17/32 I.D. x .105 inch thick - Special (not shown)
-28	9544069	1	HOUSING.. Camshaft drive
-29	40040014	1	GASKET.. Camshaft drive housing
-30	181433	27	BOLT.. Hex head 1/2-20 x 1-3/4
-31	181429	24	BOLT.. Hex head 1/2-20 x 1-1/4 (not shown)
-32	8028329	4	BOLT.. Drilled hex head 1/2-20 x 1-1/4 - Housing mounting (not shown)
-33	8407428	7	BOLT.. Drilled hex head 1/2-20 x 1 (not shown)